

Captive Wildlife Critical Incident & Natural Disaster Response



Lt. John Conlin (850) 617-9579

john.conlin@myfwc.com



What is Captive Wildlife

- Rule 68A-1.004(18), Florida Administrative Code (F.A.C.) defines captive wildlife as:
 - Any wildlife, specifically birds, mammals, reptiles, and amphibians maintained in captivity for exhibition, sale, personal use, propagation, preservation, rehabilitation, protection or hunting purposes.



Classes of Captive Wildlife

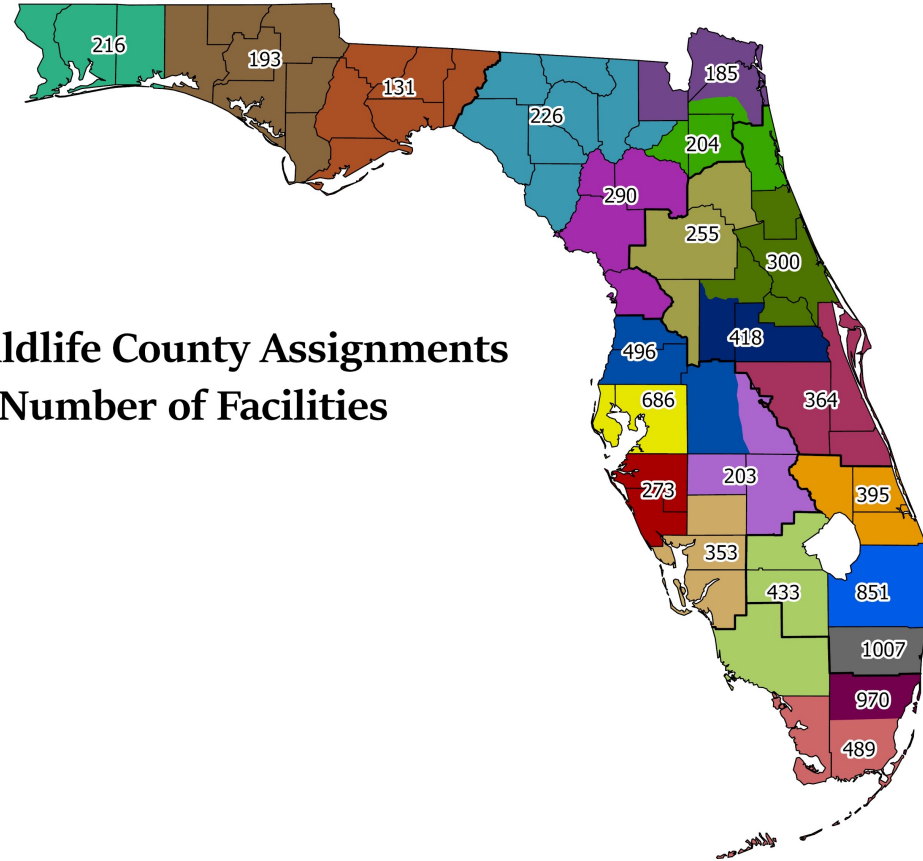
- Class I
 - Wildlife which because of nature, habits, or status, shall not be possessed as a personal pet.
- Class II
 - Wildlife considered to present a real or potential threat to human safety.
- Class III
 - All other wildlife not included in Class I or Class II.



Captive Wildlife & Where it's located

Captive wildlife is everywhere in Florida!

- Zoo's
- Deer farmers
- Reptile keepers
- Hobbyist possessor's and personal pets



Captive Wildlife County Assignments
and Number of Facilities



Captive Wildlife Critical Incidents

Critical Incident is defined as an incident resulting in the severe injury or death suffered by any person, to include any severe bite, mauling or envenomation, caused by a Class I or II wild animal, venomous or dangerous reptile; or the escape of any Class I or II wild animal, exotic venomous or dangerous reptile from the licensed facility or when an escape places the public at risk of harm: or a natural disaster event such as a flood, earthquake, wildfire, or hurricane that causes great damage to property or loss of life.



Policy

Provide a prompt and safe response to any captive wildlife critical incident, ensuring the safety and welfare of the public, FWC staff and wildlife to the greatest extent possible in consideration of circumstances specific to a given incident.

This mission is best accomplished through the implementation of an organized response through Incident Command System (ICS) operating procedures

ICS procedures are detailed in Captive Wildlife Critical Incident SOP's



When the call comes in

Dispatch

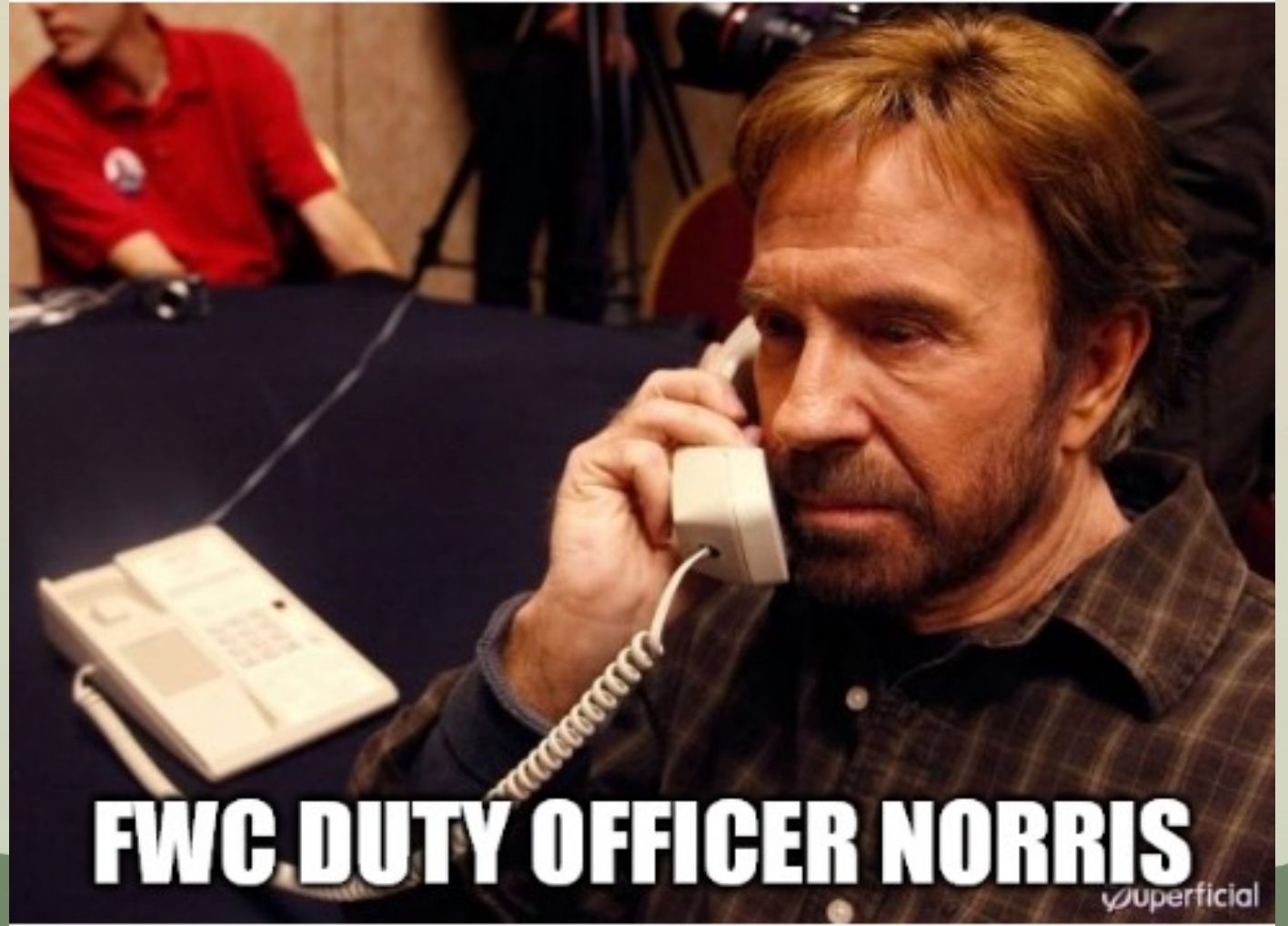
Passerby/Neighbor report escape

Licensee notifies investigator

Media tip

Other agencies

- State Agencies
- County Sheriff
- Local police dept



Responding to Critical Incidents

- Incident Command System
 - A flexible incident management approach that allows for the integration of personnel, equipment, facilities, procedure and communication within a unified organizational structure and enables a coordinated response among various entities



Why we need to be prepared

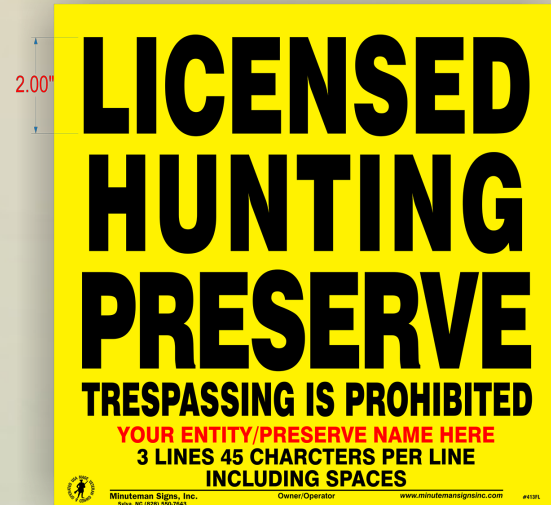
Zanesville, Ohio - 2011

<https://www.youtube.com/watch?v=u4rnchDmGMU>



What to look for

This sign is **FLORIDA STATE LEGAL** for all licensed hunting preserves

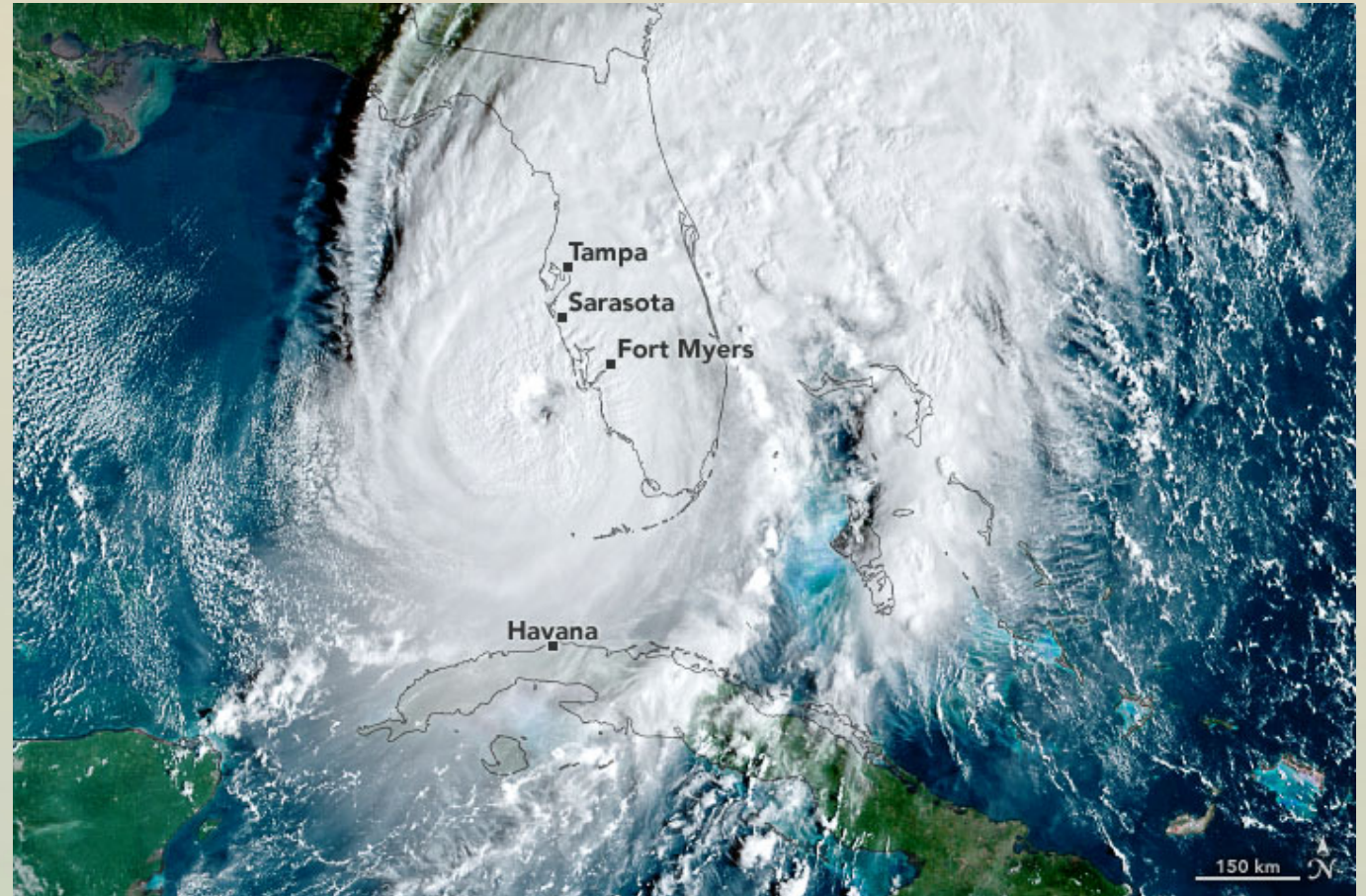


Signs are typically printed to order, and may need 2 weeks. Please inquire for rush orders.



Natural Disasters

- Hurricanes
- Flooding
- Fire



Coordination

- SEOC – State Emergency Operations Center
 - ESF 16 Law enforcement
 - ESF 17 Animal Protection
- EOC's – Local Emergency Operations Centers



Operational needs

- Logistics
- Communications
- Equipment needs
 - specialty equipment
 - other agency response



Resources

- Lt. J Conlin 850-617-9579 / 407-747-1978
- Alpha Report Requests to cwapps@myfwc.com
- Regional/County Contacts
 - Area Captive Wildlife Investigators



Questions

